

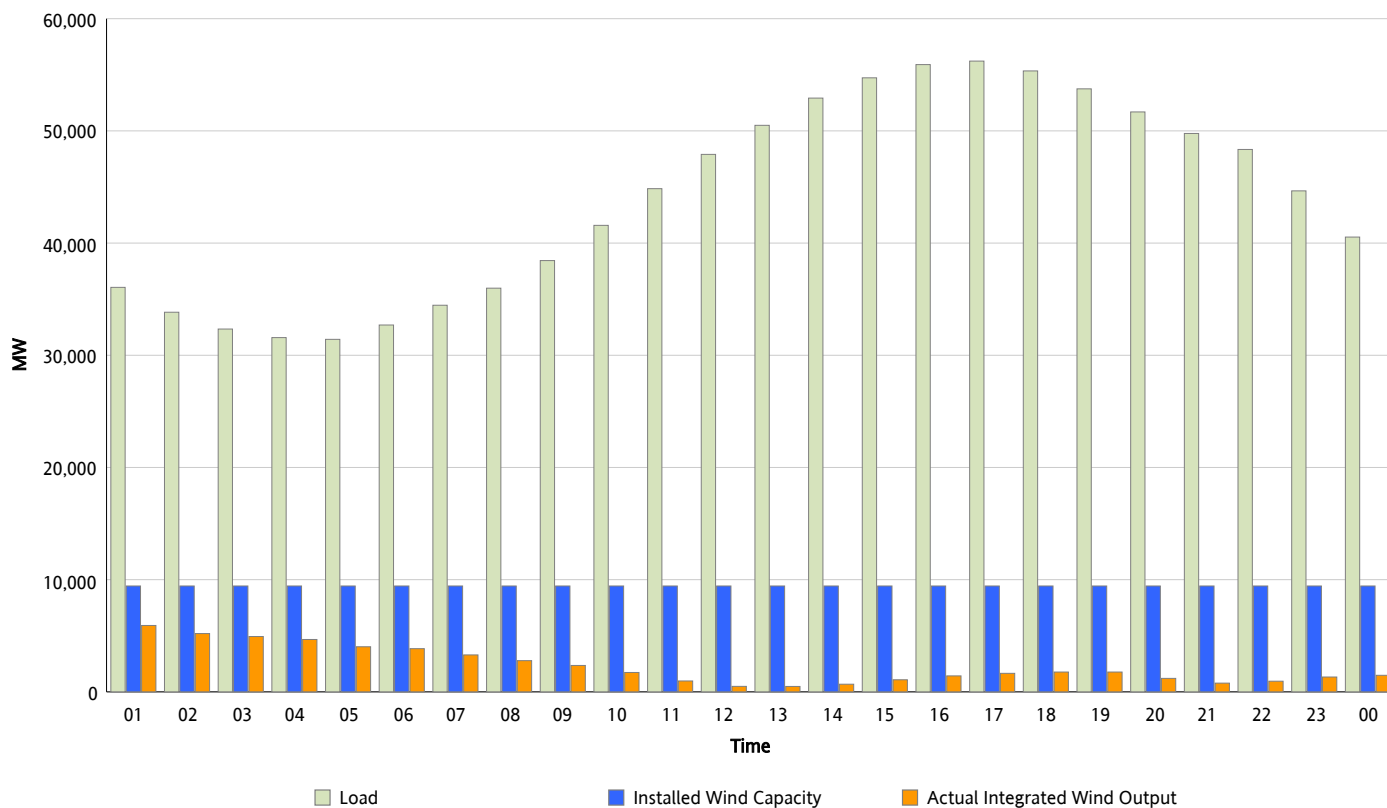


## ERCOT Grid Operations

### Wind Integration Report : 06/21/2012

Peak Load	56,222 MW
Load Peak Hour (HE)	17
Wind Over Peak	1,652 MW
Wind Record 06/19/12	8,368 MW
Max Wind Value*	6,199 MW
Wind Peak Time	00:06
Wind Integration %	16.69 %

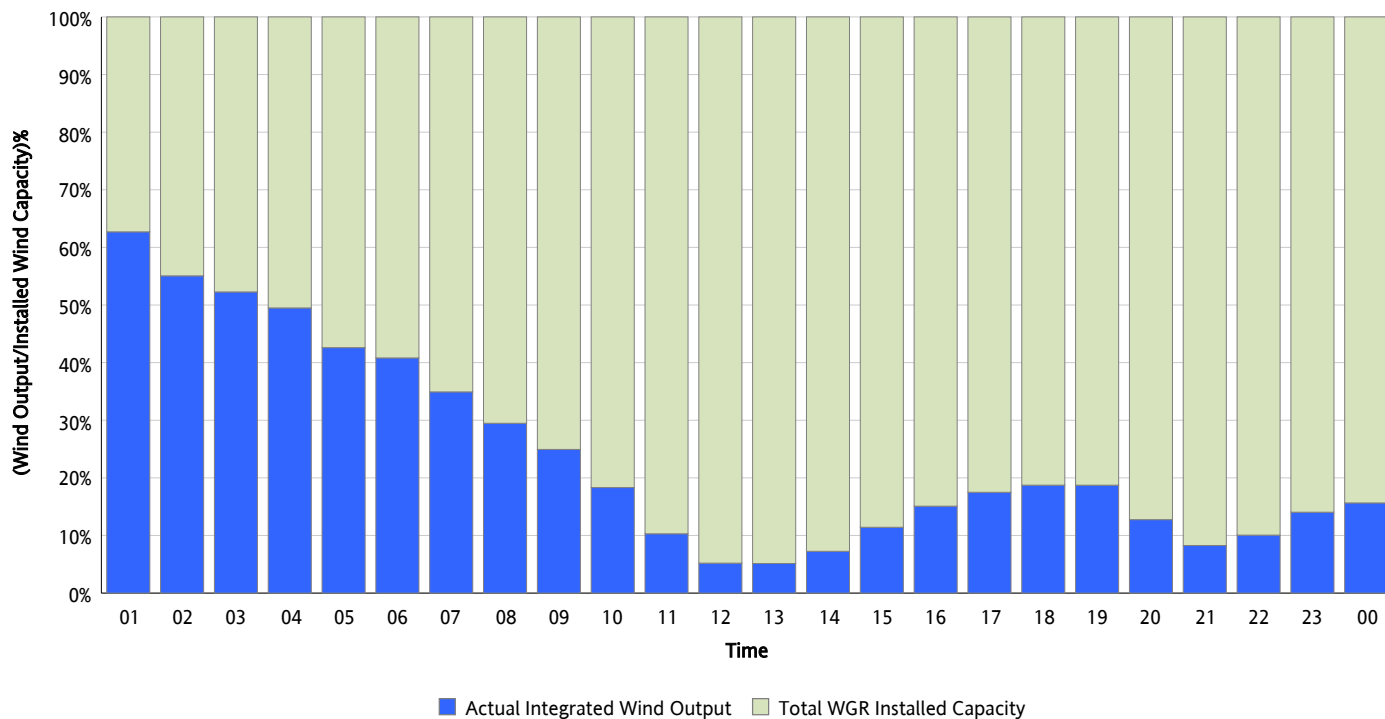
**Hourly Average Actual Load vs. Actual Wind Output**  
**06/21/2012**



\* Wind Record and Wind Max represent instantaneous values and the rest of the values are integrated over the hour

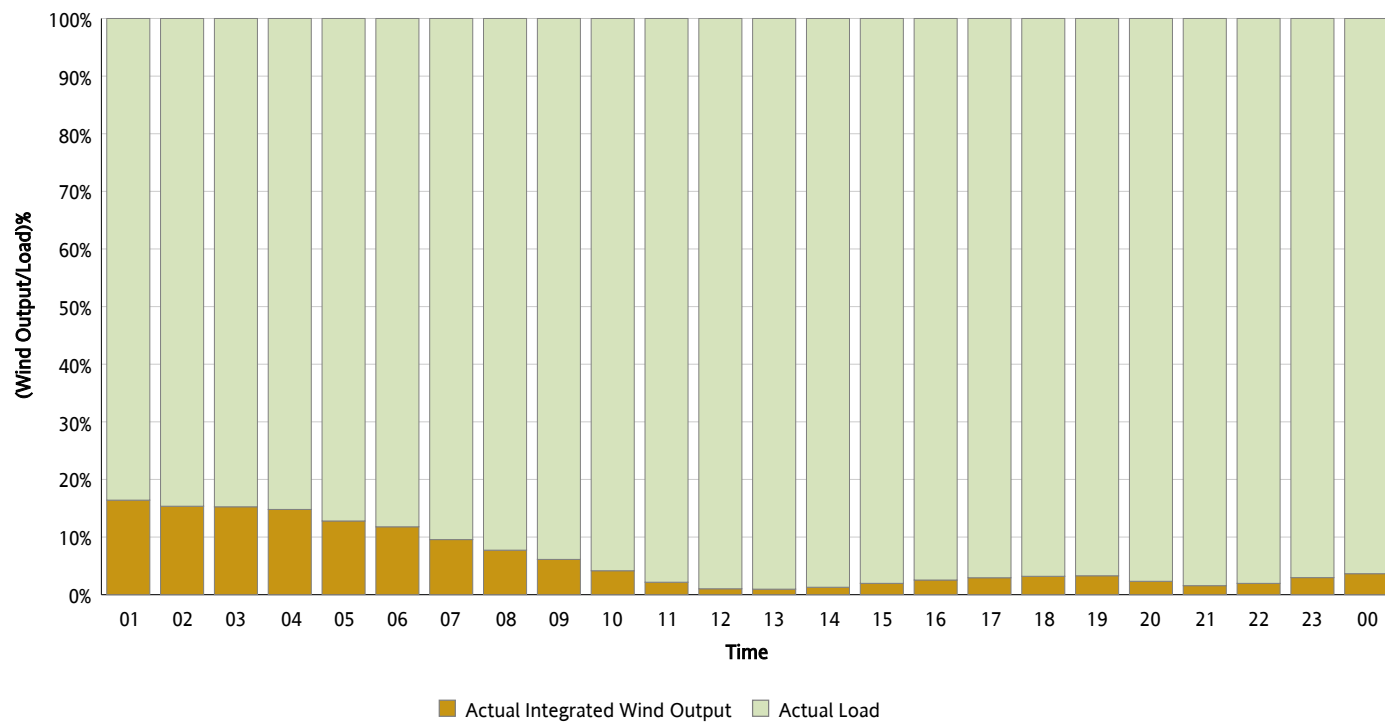
## Actual Wind Output as a Percentage of the Total Installed Wind Capacity

06/21/2012



## Actual Wind Output as a Percentage of the ERCOT Load

06/21/2012



## ERCOT Load vs. Actual Wind Output

06/14/2012 - 06/21/2012

